



2^a

Jornada

**Industria textil
y sostenibilidad**



Certificación Cradle to Cradle para productos textiles

Aglaia Gómez D'Alessandro. Eco Intelligent Growth

Sobre EIG

Consultoría de
Economía Circular en
base a los principios
de Cradle to Cradle®.



FUNDACIÓN

2005

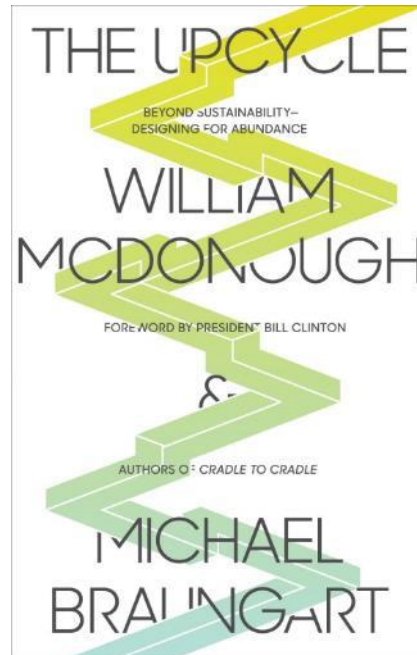
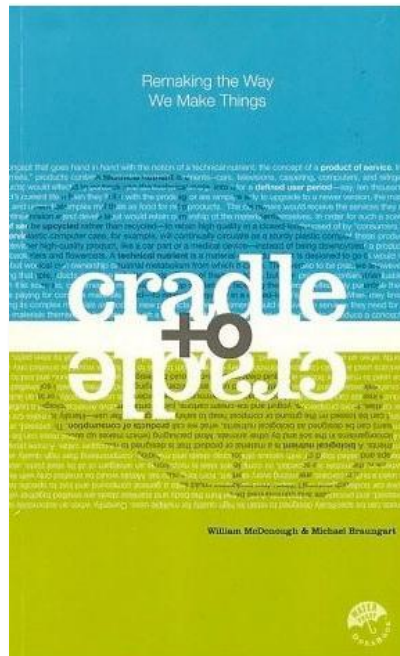


**¿Qué significa un
producto
certificado C2C?**



Cradle to Cradle®

La Visión



Our goal is a delightfully diverse, safe, healthy and just world, with clean air, water, soil and power—economically, equitably, ecologically and elegantly enjoyed.

Waste = Food
Use Current Solar Income
Celebrate Diversity

100%

clean, renewable energy

100%

products
made
with *safe*,
healthy materials

100%

materials are *intelligently*
cycled

100%

manufacturing systems
replenish natural systems

¿Cómo se hace un producto certificado C2C?

Estándar multiatributo

Diseñando con materiales saludables



Eliminando el concepto de residuo



Produciendo con energías limpias y abundantes



Protegiendo el agua como un recurso valioso



Respetando los sistemas humanos y naturales



Diseñando para la Mejora Continua



C2C Certified™

Quién lo reconoce



LEED



The Home Depot



US EPA



City & County of San Francisco



Google Portico



Amazon.com



BREEAM



Rabobank



Walmart



Walgreens



WELL Building Standard



Rabobank

www.c2ccertified.org/get-certified/recognition

C2C Certified™

Quién lo apoya: PLUS Membership

fashionpositive⁺

 ATHLETA

BANANA REPUBLIC

EILEEN
FISHER

G-STAR RAW

H&M

KERING


LOOMSTATE

MARA HOFFMAN

M&S
EST. 1884

STELLA
McCARTNEY



fashionpositive⁺

HOME

PLUS

MATERIALS COLLECTION

HOW WE DO IT

WHO WE'VE TOUCHED

ABOUT

NEWS

EVENTS

EDUCATION

FASHION POSITIVE MATERIALS COLLECTION

YARNS FABRICS DYES + FINISHES THREAD, TRIMS + NOTIONS APPAREL

Your digital resource for Cradle to Cradle Certified™ materials

www.c2ccertified.org/fashionpositivematerials/

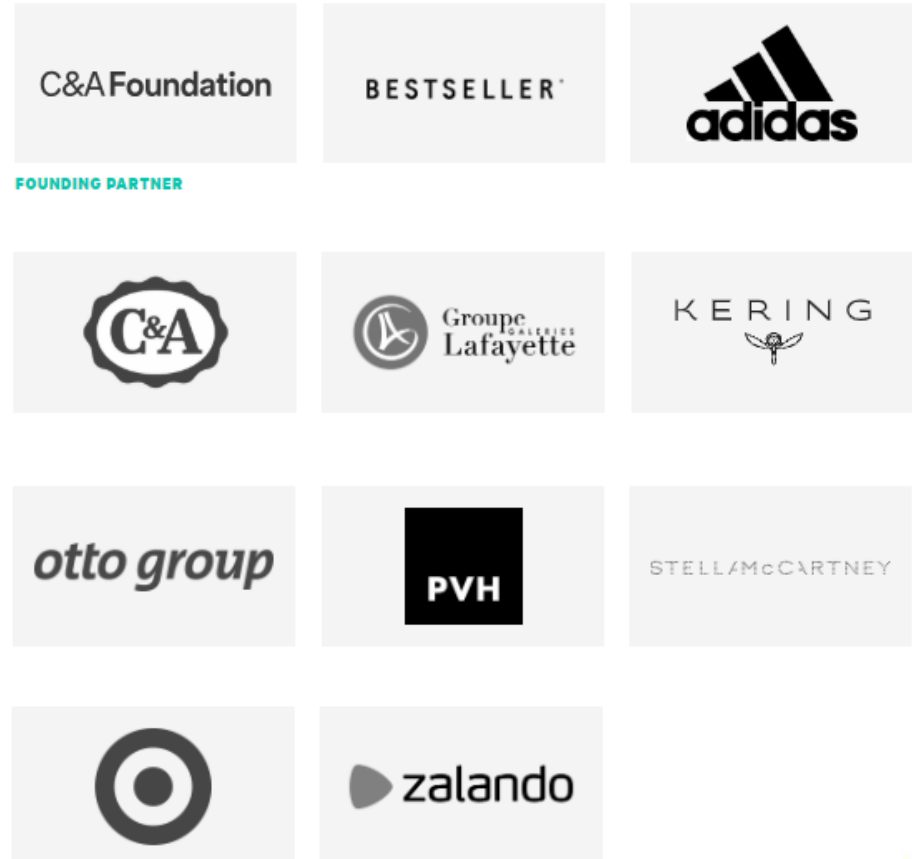


C2C Certified™

Iniciativa Fashion for Good

Primera camiseta Cradle to Cradle Certified™ Gold

FASHION FOR GOOD



C2C Certified™

Los productos



#WearTheChange
CRADLE TO CRADLE CERTIFIED™ GOLD



OUR RESOURCES THAT CAN SUPPORT YOU with your C2C Certified™ project.



Table 9: Optimised Bill of Materials: Cotton Blossom

	Product	Function	Manufacturer	Assessment
1	Ultravon RLF	Wetting agent	Huntsman Textile Effects	C
2	Albafluid EL3DM	Anti creasing agent/ Lubricant	Huntsman Textile Effects	C
3	Caustic	Alkali for pretreatment	TCC Ltd.	C
4	Hydrogen Peroxide	Bleaching chemical	Hindustan Organic	C
5	Clarite CBB	Peroxide stabilizer	Huntsman Textile Effects	C
6	Glacial Acetic Acid	Neutralising Acid	IOL Chemicals	C
7	Invatex AC	Core PH neutralizer	Huntsman Textile Effects	C
8	Felosan RGN	Wetting agent	CHT BEZEMA	C
9	Kleerix PER	De Mineralising chemical	Rossari Biotech	C
10	Neutracid NCS	Core PH neutralizer	CHT BEZEMA	C
11	Sodium Sulphate (GI Salt)	Dyes Exhaustion	Grasim Industries	B
12	Soda Ash	Dye fixation	TATA Chemicals	B

C2C Certified™ How-To Guide handbook

This handbook is a useful resource for garment suppliers striving to produce C2C Certified products, as it outlines the principles and criteria of the C2C Certified Products Programme and provides a multitude of best practices and showcases along the five C2C Certified criteria.

[FIND OUT MORE](#)

C2C Certified™ Assessed Materials Almanac

An overview of materials and processes assessed for Cradle to Cradle Material Health relevant to the apparel industry.

[DOWNLOAD PDF \(9 MB\)](#)

C2C Certified™ Denim Guide

This handbook is a useful resource for garment suppliers striving to produce C2C Certified denim, as it outlines the lessons learned in developing the world's first Cradle to Cradle Certified GOLD denim jeans product.

[DOWNLOAD PDF \(3 MB\)](#)

Test your C2C Certified™ level

Here you can test your potential C2C Certified achievement level by taking a self-check in the five different categories of the C2C Certified Products Program: Material Health, Material Reutilisation, Renewable Energy, Water Stewardship, and Social Fairness.

[START TEST](#)

Sample Project Plan

The sample project plan can help you set up a project to develop a C2C Certified garment. The plan details out the steps that each C2C Certified project should follow, provides guidance on timelines, and provides a detailed showcase at the end.

[DOWNLOAD PDF \(824 KB\)](#)

Sample Business Case

The business case describes the upfront investments and changes in product costs that can occur when starting a first C2C Certified project and shows how a C2C Certified project can be profitable.

[DOWNLOAD PDF \(730 KB\)](#)



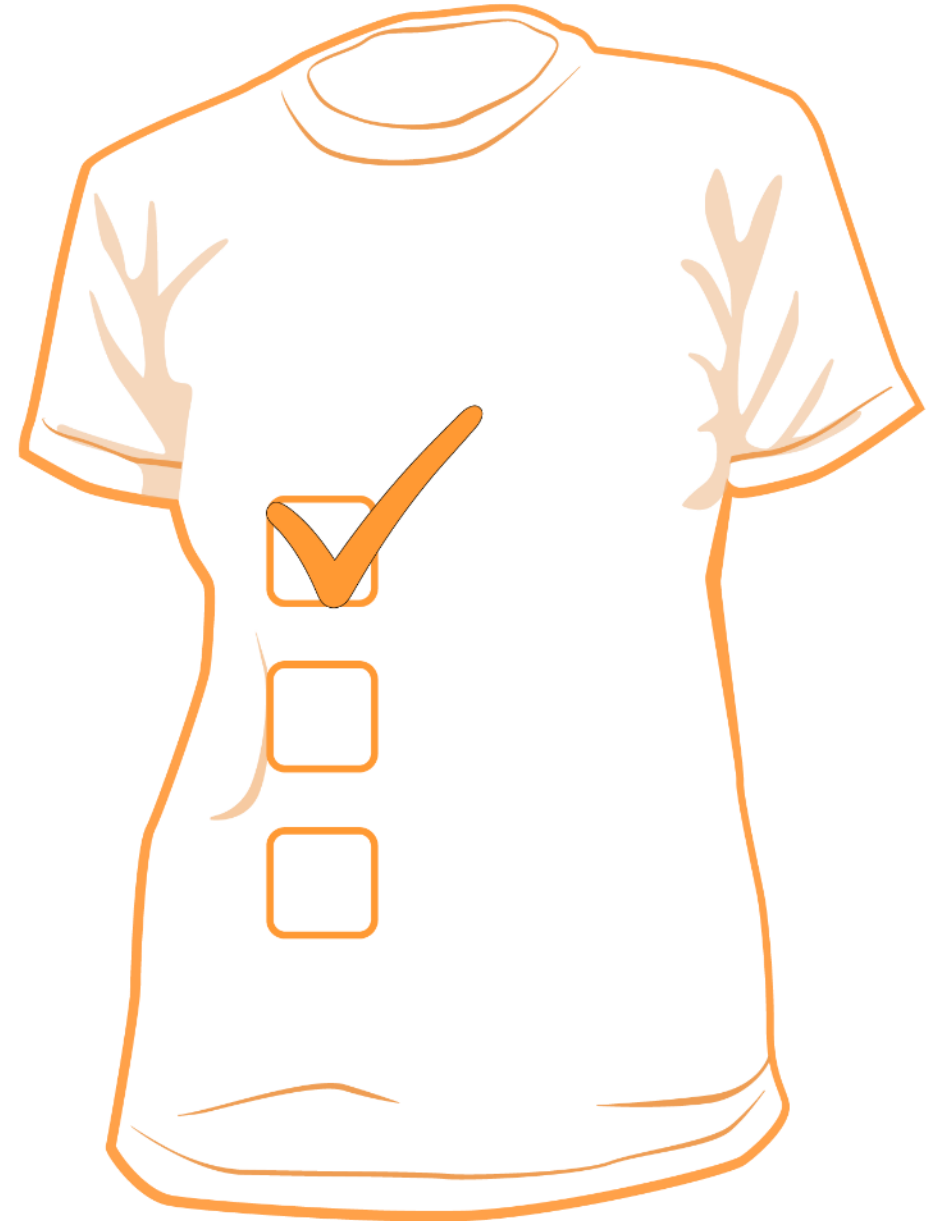


Diseño de productos saludables para las personas y el entorno desde la producción hasta la reutilización

Safe ingredients perpetually cycled

Los Productos

¿Cuántos ingredientes llevas puestos?



Los Productos

¿Cuántos ingredientes lleva puestos?



Tejido
100% algodón orgánico

Tintas impresión
Verificadas saludables

Sin etiqueta



Material
Health

Colorantes
certificados

Costuras
100% algodón
orgánico

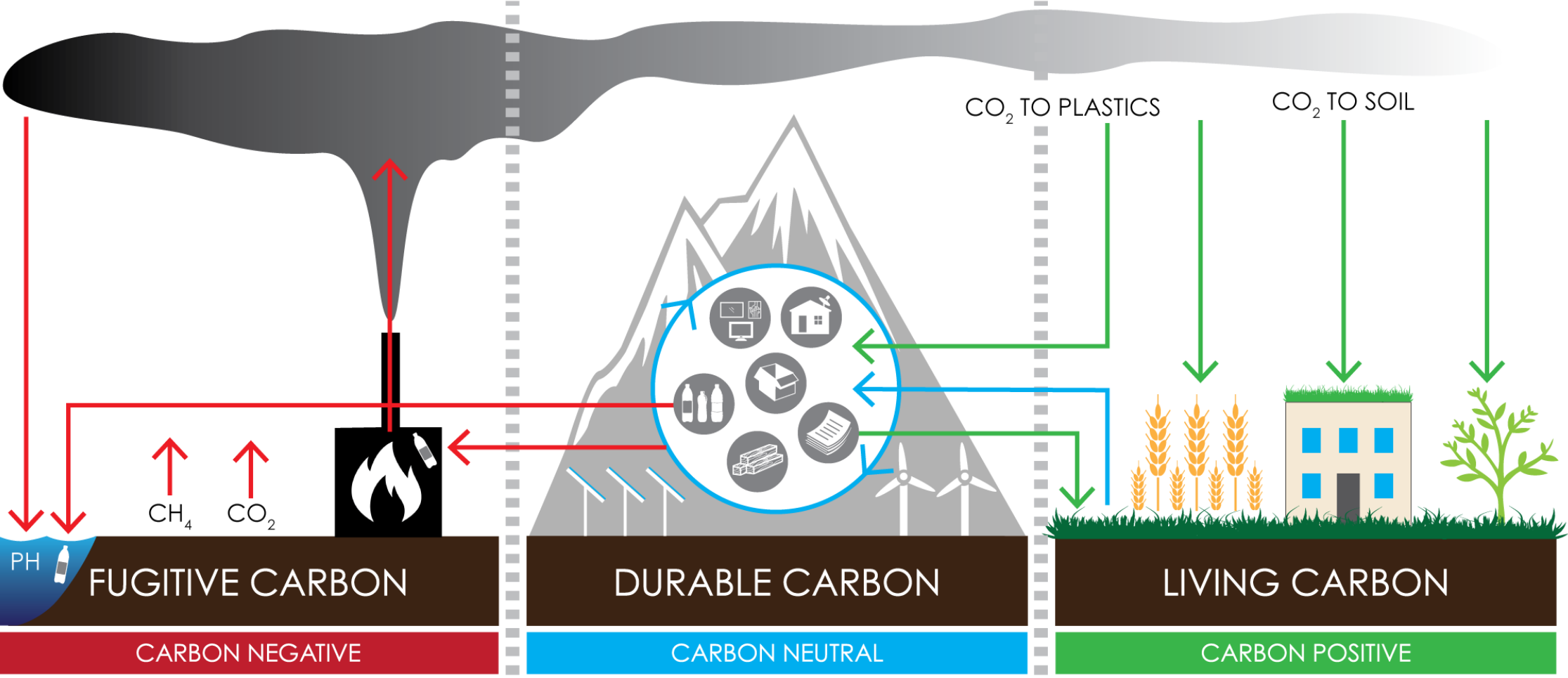


Renewable
Energy

Producido con fuentes energéticas abundantes y limpias, que generen impactos positivos en la sociedad y regeneren los ecosistemas naturales

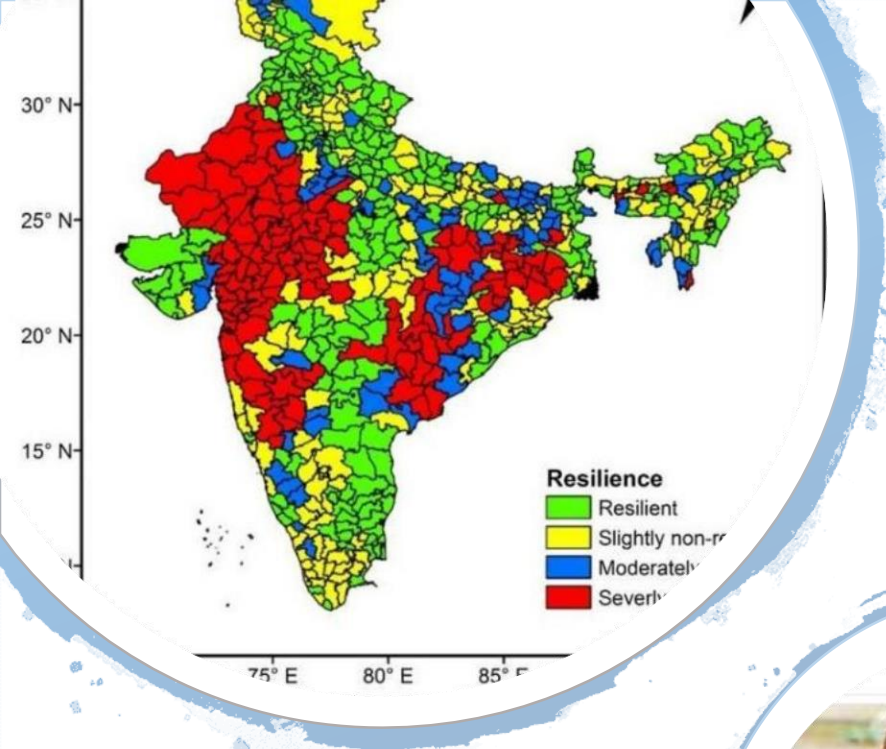
100%+ renewably powered

The New Language of Carbon



©2016 WILLIAM McDONOUGH





Camisetas hechas con electricidad renovable

Emisiones de CO_{2e} no evitables compensadas

Emisiones cadena suministro calculadas (5% compensadas)



Tratando el agua como un recurso valioso, fomentando la gestión efectiva y estratégica para generar un impacto positivo en el entorno

Water out is cleaner than the water coming in



- 90%+ del agua utilizada es tratada y reincorporada al proceso.
- El resto se reincorpora al ciclo del agua por evaporación

ZERO DISCHARGE FACILITY



100% water recycled and reused back in facility.



RAIN WATER HARVESTING



Groundwater recharging. 4 times water positive.





Empresa responsable y ética con toda su cadena de valor, incluyendo el medio ambiente

A partner to all stakeholders



Las empresas van más allá de la normativa para fomentar la calidad de vida de sus trabajadores y comunidad local.

WE



Empowering women by promoting their skills, development and inductions across the processes and organization

SWARAJ



A ware of sustainable changes to create holistic farming communities

VASUDHA ORGANIC



Engaging 35,000 farmers over 170,000 acres to produce sustainable cotton



Material Reutilization

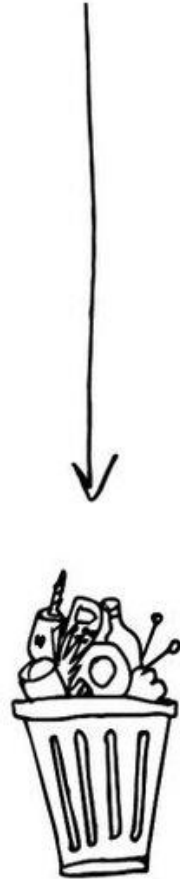
Diseño eliminando el concepto de “Residuo” con ciclos de nutrients intencionados para mantener todo el valor del nutriente

100% recovery and upcycling



**SAFE &
CIRCULAR**

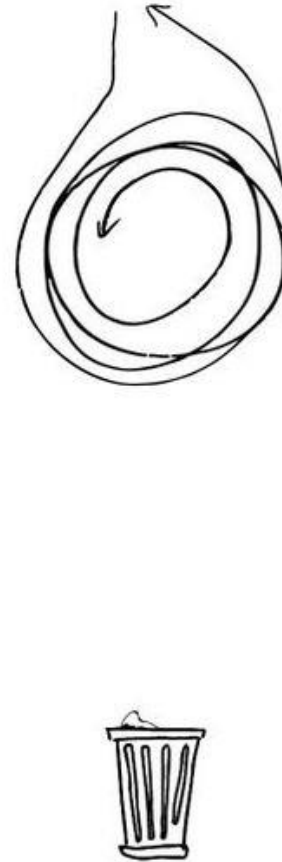
LINEAR ECONOMY



RECYCLING ECONOMY



CIRCULAR ECONOMY



How to give the T-Shirt its next life?

Reuse via Donation

Donate clothing that can still be worn in take back bins, so it can be reused again or donated for humanitarian relief. A list of trustworthy donation facilities can be found on our website.

Recycle via Donation

In case the clothing donated to the take back bin cannot be worn, it will be transformed by textile recycling companies into low value products such as rags and to a small extent cotton yarn.

By donating C2C Certified clothing to "Fashion for Good" you will be actively supporting pilots to help scale chemical recycling of clothing. The donation can be sent via post to: Fashion for Good, Rokin 102, 1012 KZ Amsterdam.

"Fashion for Good" is a joint-industry initiative with the goal to catalyse the transition of the current fashion industry to a circular industry. It was created with an initial grant by founding partner C&A Foundation.

Compost at home

C&A's Gold Level C2C Certified™ organic cotton clothing is safe enough for home composting and can be returned into the biological nutrient cycle. Make sure: If any irreversible modifications to the clothing are made at home, for example, dyeing, then the clothing should not be composted.



DESIGNED TO BE RECYCLED.

Organic. Socially responsible. Respecting nature.

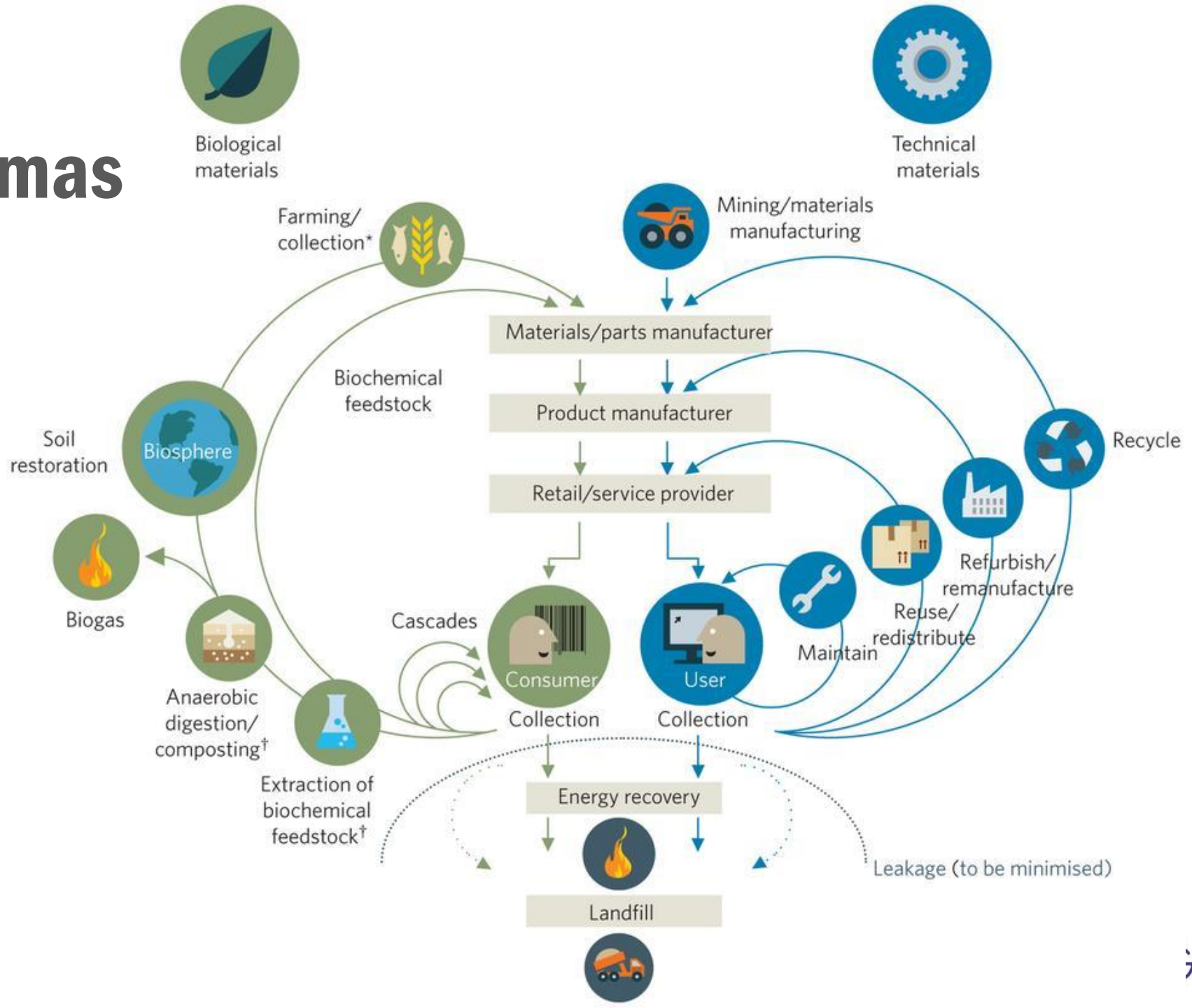


Pero es compostable... (testada)

¿Dónde está el reto? ¿Y la oportunidad?

THANK YOU FOR YOUR CONTRIBUTIONS

Pensar en sistemas



¡Gracias!

Aglaia Gómez d'Alessandro
C2C Fashion Lead
a.gomez@ecointelligentgrowth.net



eco intelligent growth

Amposta 14-18, bajos 2, 08174 Sant
Cugat del Vallès. Barcelona
T: +34 93 419 9080 .
info@ecointelligentgrowth.net
www.ecointelligentgrowth.net

Detox campaign vs C2C BLS

11 priority chemical groups

- 1) Alkylphenols & ethoxylates
- 2) Phthalates
- 3) Brominated and chlorinated flame retardants
- 4) Azo dyes releasing carcinogenic amines through reductive cleavage
- 5) Organotin compounds
- 6) Poly- and Perfluorinated chemicals
- 7) Chlorobenzenes
- 8) Chlorinated solvents
- 9) Chlorophenols
- 10) Short-chain chlorinated paraffins
- 11) Heavy metals: cadmium, lead, mercury and chromium (VI)



Version 3.0 Banned List Chemicals

PVC, PVDC, CPVC, polychloroprene

11. Metals: Arsenic, cadmium, chromium VI, Mercury, Lead*
(Biological nutrient threshold = maximum background soil concentration)

3. Flame Retardants: HBCD, PBDEs, TBBPA, TDCPP

2. Phthalates: DEHP, BBP, DBP

7, 10. Chlorinated hydrocarbons: chlorobenzenes, PCBs, short-chained chlorinated paraffins

9. Pentachlorophenol

1. Nonyl- and octylphenols, nonyl- and octylphenol ethoxylates

5. Organotins

6. PTFE* (Banned in Technical Nutrients if primary component of product or material)

6. PFOA, PFOS

PAHs*



C2C Certified™ and the SDG's



Table 1: Comparison of C2C Certified Products Program with other standards

C2C Certified	Bluesign	ZDHC	OEKO-TEX 100/STeP	HIGG Facility	Fairtrade USA
3rd party?	Self with 2nd-party audit	Audit tools for brands	Yes	Self with 2nd-party audit	Yes
Multi attribute?	Yes	Yes	Yes	Yes	Yes
Material Health Criteria	Partial	Partial	Aligned	Partial	Partial
Material Reutilisation Criteria	n/a	n/a	n/a	Partial	n/a
Renewable Energy Criteria	Partial	n/a	Partial	Partial	Partial
Water Stewardship Criteria	Partial	Partial	Partial	Partial	n/a
Social Fairness Criteria	Partial	n/a	Partial	n/a	Aligned

Please see detailed comparisons in “Further Resources: Apparel Standards Comparison to C2C Certified”