

EXTEND™

UPGRADE SYSTEMS

Instron® 4500 Series Universal Testing Systems

EXTEND™ the system life and capability of your Instron 4500 testing system by upgrading the control system with Instron's advanced 5500 electronics and software. Instron has experience in upgrading over 5,000 test systems. EXTEND packages have been added to electromechanical loads frames manufactured five, ten even twenty years ago and have resulted in systems which are more productive and have less down time.

EXTEND Package

- Removal of old controls, recorders and other analogue components.
- Installation of Instron's advanced 5500 electronics
- Installation of Bluehill® 2 software, a fully intergrated modular software package.
- Local installation and service support from Instron Professional Services
- Factory direct hardware and software support of your new software and controls

5500 Series Electronics

- Standard load measurement channel is provided. Two additional transducer channels can be added for strain.
- Position measurement/ speed control standard on all servo systems.
- Automatic recognition and calibration of system transducers.
- Single range system to eliminate range crossover transients.
- AC excitation to reduce noise on system transducers.

Bluehill 2 Software

- Intuitive tabbed user interface
- Output in Microsoft® Word, PDF or HTML formats
- Conversion of existing Merlin™ or Series IX™ test methods and data
- Free-form or prompted testing modes
- Multiple channels of external input as an option (16 max.)
- Raw data with copy and paste capabilites
- Integrated software package featuring six major application modules to meet a wide range of static and cyclic testing
- Intelligent data rates set-up
- Displays and analyzes multiple real-time test curves
- Expansive calculation library to capture the most critical test data



▲ An Instron 4505 testing frame with 5500 series electronics and Bluehill 2 software

Why EXTEND?

Excessive downtime and high cost of maintenance/ repairs?

EXTEND customers experience less downtime and greatly reduced maintenance costs. Some customers report productivity increases of 30%.

Questionable test results?

Computer controlled test procedures, together with automated data collection and result generation, provide more accurate and repeatable test results.

Need for computerization?

EXTEND upgrades eliminate obsolete dial or digital indicators and provide PC based automatic result calculations, result storage, report generation and networking.

Lack of networking ability?

Provide access to your test results over a local area network and eliminate the time and expense necessary to deliver test reports to various parts of your company.

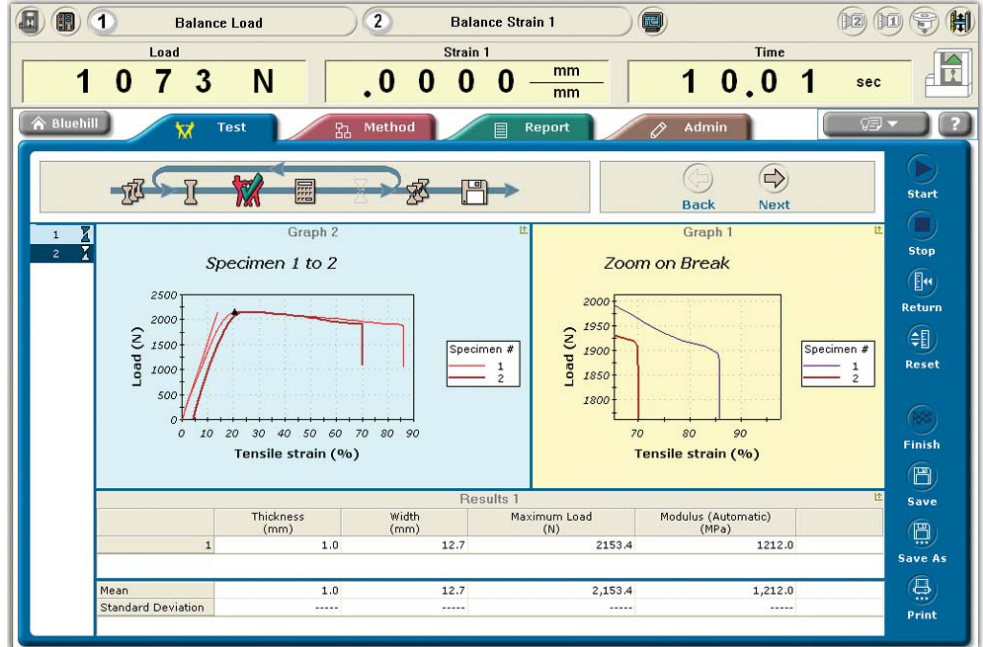
Instron® 4500 Series

Universal Testing Systems

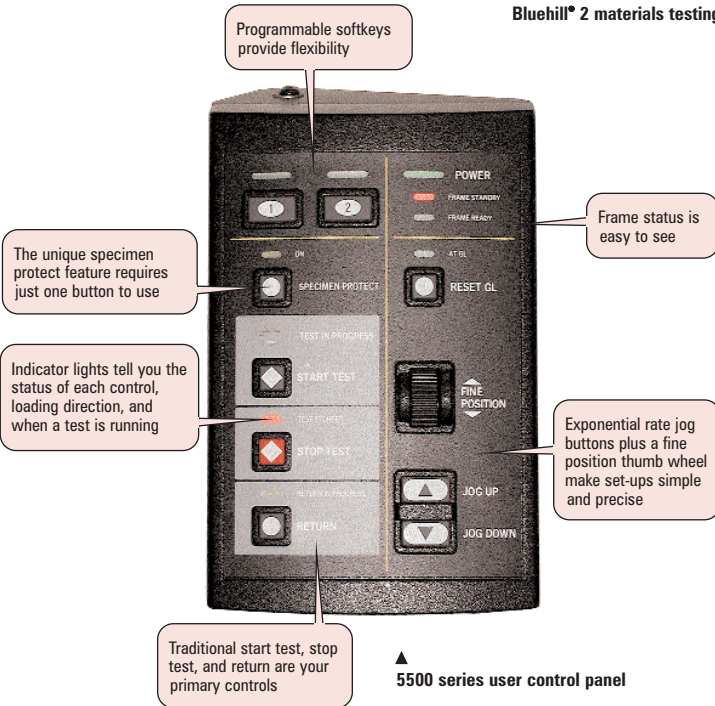


Specifications

Data Channels	Load channel standard Position channel standard 2 strain channels optional
Data Sampling Rate	40 kHz
Data Capture Rate	Selectable up to 500 Hz Synchronous on all channels
Digital Signal Processor	32-bit floating point Self-test diagnostics Real-time system status Real-time closed-loop control Real-time data acquisition
Transducer Inputs	24-bit resolution Automatic recognition and calibration Any 0 to 10 V analog DC input
User Panel	Manual control of load/ unload Specimen protect Test start, stop and return functions



▲ Bluehill® 2 materials testing software running in Windows® 2000 and XP



User Control Panel

All EXTEND™ system upgrades with servo control include the unique 5500 user panel. This panel is conveniently mounted at the load frame and provides push button access to common testing functions such as start test, stop test, return to start, manual load/ unload control, and specimen protect. The user panel has two user programmable soft-keys that provide for functions such as balancing load and balancing strain.



Corporate Headquarters
825 University Avenue, Norwood, MA 02062-2643, USA
Tel: +1 800 564 8378 or +1 781 575 5000 Fax: +1 781 575 5725

European Headquarters
Coronation Road, High Wycombe, Bucks HP12 3SY, UK
Tel: +44 1494 464646 Fax: +44 1494 456123

www.instron.com

Instron Industrial Products
900 Liberty Street, Grove City, PA 16127-9969, USA
Tel: +1 724 458 9610 Fax: +1 724 478 9614

Instron is a registered trademark of Instron Corporation. Other names, logos, icons and marks identifying Instron products and services referenced herein are trademarks of Instron Corporation and may not be used without the prior written permission of Instron. Other product and company names listed are trademarks or trade names of their respective companies. Copyright © 2005 Instron Corporation. All rights reserved. All of the specifications shown in this brochure are subject to change without notice.