



UNIVERSITAT POLITÈCNICA  
DE CATALUNYA  
BARCELONATECH

# BACHELOR'S, MASTER'S AND DOCTORAL PROGRAMMES

2026-2027

# Studying at the UPC

Come to the **Universitat Politècnica de Catalunya - BarcelonaTech (UPC)**, a world-class university in engineering, architecture, sciences and technology

## Reasons for choosing the UPC

### 1.

#### Leader in international rankings

**QS World University Rankings by Subject, 2025**

Among the world's 100 best universities in Engineering and Technology and the 38th in Architecture and Built Environment.

**THE Impact Rankings**

Among the world's 75 best universities in the Sustainable Development Goal (SDG) on climate action.

### 2.

#### You play the starring role

Official bachelor's, master's and doctoral degrees that can be homologated and taught at schools in Barcelona: be the protagonist of your educational story.

**70** bachelor's degrees

**100** master's degrees

**46** doctoral programmes

### 3.

#### Innovation and prestige

Receive multidisciplinary training with an international vocation that is highly valued in the industrial and economic environment. Contribute sustainable and ethical solutions to the great challenges of the production sector.

**30% of master's students and 53% of doctoral candidates at the UPC are international: 80% are from countries outside the European Union.**

### 4.

#### Training without borders

**270** educational cooperation agreements with universities in 40 countries will allow you to study abroad

**1,637** exchange agreements with 695 universities of 57 countries

**3,176** students on mobility programmes

### 5.

#### Leaders in graduate employment

Join research and technological innovation projects and acquire knowledge, skills and professional experience through work placements.

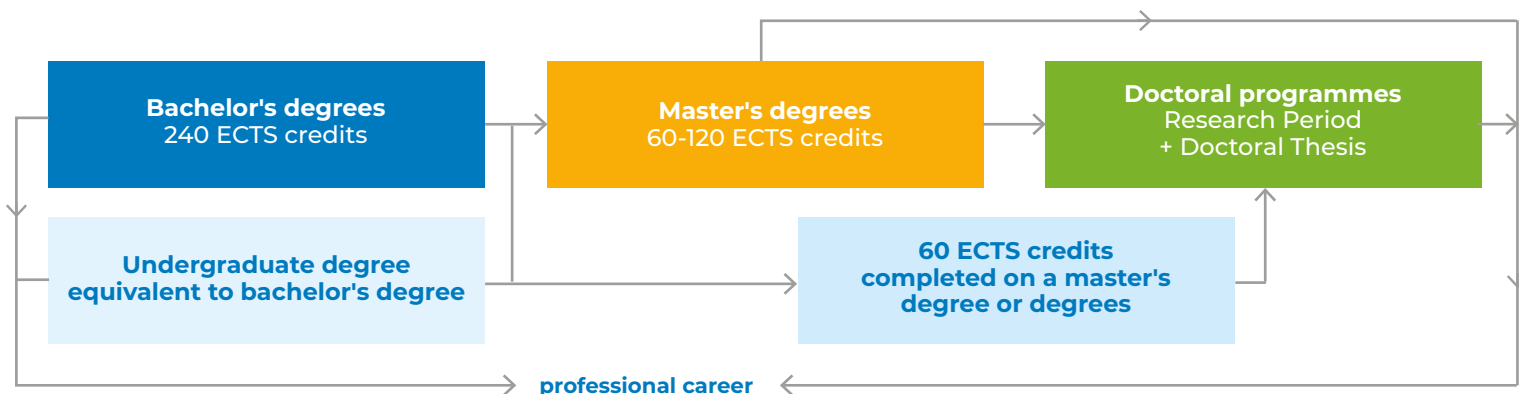
**95 %** graduate employment

**6,045** students on work placement



## You need to know

### What is the structure of university education in Spain?



### How do I get a visa to study at the UPC?

If you are a student from outside the European Union and your stay is longer than three months, contact the Spanish embassy or consulate in your country and apply for a student visa. Bear in mind that your visa will be:

- Of up to 180 days if your stay is shorter than six months. This type of visa does not entitle you to apply for a student card in Spain or extend your stay.
- Long-term if your stay is longer than six months. You will need at least three months to complete the process.

### What medical coverage do I have in Spain?

- If you are a student from the European Union who is covered by public healthcare: apply for your European Health Insurance Card before travelling to Spain.
- If you are a student from outside the European Union: find out about any healthcare agreements that may be in place between your country and Spain. If there is one, apply for a certificate that entitles you to public healthcare in Spain if you need emergency care. The agreement will only cover emergency care.

Take into account that the Spanish embassy or consulate will generally require you to have private insurance that covers any medical attention you might need during your stay in Spain. The UPC recommends the OnCampus Estudia insurance policy.

### Where will I stay?

BCU Housing is an online platform for booking accommodation in Barcelona that is exclusively for the university community: it is the official service of Barcelona Centre Universitari and offers free advice. The HousingAnywhere and Uniplaces platforms may be useful for finding accommodation.

Consult the practical information guide

[www.upc.edu/sri/en/mobility\\_office/students-mobility-office](http://www.upc.edu/sri/en/mobility_office/students-mobility-office)  
[international@upc.edu](mailto:international@upc.edu)

### What language are classes taught in?

Find out about the use of languages at the UPC here: [www.upc.edu/slt/en/reception/languages-upc](http://www.upc.edu/slt/en/reception/languages-upc)

### What fees will I have to pay?

Every year, the Catalan government establishes and subsidises the fees for bachelor's, master's and doctoral degrees taught at public universities like the UPC. The approximate fees per academic year for a bachelor's degree are €1,061 for students from the European Union and €1,800 for students who are not residents of the European Union. For a master's degree, they range from €1,500 to €2,900 for EU students and from €3,200 to €6,100 for non-EU students, depending on the programme's number of credits. The cost of a doctoral degree is approximately €600 per academic year. (This does not include the thesis deposit or the issuing of the degree.) Consult the current fees for each programme on our website.

### How do I apply for a grant?

As a UPC student, you can apply for the grants, student financial aid and other funding options offered by the University and other public and private bodies. Our institution and our academic programmes meet the requirements of grant-awarding government agencies and bodies. If you have been awarded a grant and need the awarding agency to have signed an agreement with our university, contact us: [international@upc.edu](mailto:international@upc.edu).

### Further information:

[www.upc.edu/en/bachelors/fees-grants-and-payment-options](http://www.upc.edu/en/bachelors/fees-grants-and-payment-options)

[www.upc.edu/en/masters/fees-grants](http://www.upc.edu/en/masters/fees-grants)

[doctorat.upc.edu/en/future-doctoral-candidates/grants](http://doctorat.upc.edu/en/future-doctoral-candidates/grants)

Contact the UPC

**Bachelor's and master's degrees:**  
[info@upc.edu](mailto:info@upc.edu)

**Doctoral programmes:**  
[escola.doctorat@upc.edu](mailto:escola.doctorat@upc.edu)

# Bachelor's Degrees

## AEROSPACE ENGINEERING

Aerospace Systems Engineering. Majors: Air Navigation / Airports. **EETAC**

---

Aerospace Systems Engineering + Telecommunications Systems Engineering / Network Engineering. **EETAC** (double degree)

---

Aerospace Technology Engineering. **ESEIAAT**

---

Aerospace Vehicle Engineering. **ESEIAAT**

---

Satellite Engineering. **EETAC**

## APPLIED SCIENCES

Data Science and Engineering. **FIB+ETSETB+FME**

---

Economics and Statistics. **FME** (interuniversity UB+UPC double degree)

---

Engineering Physics. **ETSETB**

---

Marine Sciences and Technologies. Majors: Marine Sciences and Engineering / Marine Technologies. **ETSECCPB+EEABB+EPSEVG**

---

Mathematics. **FME**

---

Statistics. **FME** (interuniversity UB+UPC degree)

## ARCHITECTURE, URBANISM AND BUILDING CONSTRUCTION

Architectural Technology and Building Construction. **EPSEB**

---

Architecture Studies. **ETSAB, ETSAV**

---

Landscape Architecture. **EEABB-ETSAB**

## BIOSYSTEMS AND AGRI-FOOD ENGINEERING

Agronomic Science Engineering. Majors: Horticulture and Gardening / Agricultural Production. **EEABB**

---

Agri-Food Technologies and Business Management. **EEABB** (interuniversity UPC+UB degree)

---

Biosystems Engineering. **EEABB**

---

Food Engineering. **EEABB**

---

Landscape Architecture. **EEABB+ETSAB**

## CIVIL ENGINEERING

Civil Engineering. **ETSECCPB**

---

Environmental Engineering. **ETSECCPB+EEABB**

---

Environmental Engineering and Marine Sciences and Technologies. **ETSECCPB+EEABB+EPSEVG** (double degree)

---

Geoinformation and Geomatics Engineering. **EPSEB**

---

Mineral Resource Engineering and Mineral Recycling. **EPSEM**

## DESIGN AND MULTIMEDIA TECHNOLOGY

Design, Animation and Digital Art. **CITM**

---

Digital Design and Multimedia Technologies. **CITM**

---

Video Game Design and Development. **CITM**

---

[Video Game Design and Development.](#) **CITM**



! Bachelor's degrees taught entirely in English.

# SCHOOLS AT UPC

UPC schools are located in the city of Barcelona and other towns in the province that have good public transport connections with Barcelona: Castelldefels, Manresa, Sant Cugat del Vallès, Terrassa and Vilanova i la Geltrú.

**EEABB.** Barcelona School of Agri-Food and Biosystems Engineering

**EEBE.** Barcelona East School of Engineering

**EETAC.** Castelldefels School of Telecommunications and Aerospace Engineering

**EPSEB.** Barcelona School of Building Construction

**EPSEM.** Manresa School of Engineering

**EPSEVG.** Vilanova i la Geltrú School of Engineering

**ESEIAAT.** Terrassa School of Industrial, Aerospace and Audiovisual Engineering

**ETSAB.** Barcelona School of Architecture

**ETSAV.** Vallès School of Architecture

**ETSECCPB.** Barcelona School of Civil Engineering

**ETSEIB.** Barcelona School of Industrial Engineering

**ETSETB.** Barcelona School of Telecommunications Engineering

**FIB.** Barcelona School of Informatics

**FME.** School of Mathematics and Statistics

**FNB.** Barcelona School of Nautical Studies

**FOOT.** Terrassa School of Optics and Optometry

**CFIS.** Interdisciplinary Higher Education Center (double degrees)

**CITM.** Image Processing and Multimedia Technology Center (affiliated school)

## HEALTH SCIENCES AND TECHNOLOGY

Biomedical Engineering. **EEBE**

Optics and Optometry. **FOOT**

**Bioinformatics. FIB+ETSETB** (interuniversity UPC+UB+UAB+UPF degree)

## INDUSTRIAL ENGINEERING

Automotive Engineering. **EPSEM**

Biomedical Engineering. **EEBE**

Chemical Engineering. **EEBE, EPSEM, ESEIAAT**

Electrical Engineering. **EEBE, ESEIAAT**

Electrical Engineering and Railway Systems. **EPSEVG**

Energy Engineering. **EEBE**

Industrial Design and Product Development Engineering. **EPSEVG, ESEIAAT**

Industrial Electronics and Automatic Control Engineering. **EEBE, EPSEM, EPSEVG, ESEIAAT**

**Industrial Technologies and Economic Analysis. ETSEIB** (interuniversity UPC+UPF degree)

Industrial Technology Engineering. **ESEIAAT, ETSEIB**

Materials Engineering. **EEBE**

Mechanical Engineering. **EEBE, EPSEM, EPSEVG, ESEIAAT**

Textile Technology and Design Engineering. **ESEIAAT**

## INFORMATICS ENGINEERING

Artificial Intelligence. **FIB**

**Bioinformatics. FIB+ETSETB** (interuniversity UPC+UB+UAB+UPF degree)

Data Science and Engineering. **FIB+ETSETB+FME**

Geoinformation and Geomatics Engineering. **EPSEB**

ICT Systems Engineering. **EPSEM**

Informatics Engineering. Majors: Computing / Computer Engineering / Software Engineering / Information Systems. **FIB**

/ Information Technologies. **EPSEVG, FIB**

## NAVAL, MARITIME AND NAUTICAL ENGINEERING

Marine Technologies. Majors: On-Board Practicals / Marine Electrotechnics. **FNB**

Nautical Science and Maritime Transport. Majors: On-Board Practicals / Maritime Business and Port Logistics. **FNB**

Naval Systems and Technology Engineering. **FNB**

## TELECOMMUNICATIONS ENGINEERING

Audiovisual Systems Engineering. **ESEIAAT**

Data Science and Engineering. **FIB-ETSETB+FME**

Electronic Engineering and Telecommunications. **ETSETB**

Geoinformation and Geomatics Engineering. **EPSEB**

ICT Systems Engineering. **EPSEM**

Network Engineering. **EETAC**

Satellite Engineering. **EETAC**

Telecommunications Systems Engineering. **EETAC**

Telecommunications Systems Engineering / Network Engineering + Aerospace Systems Engineering. **EETAC** (double degree)

Telecommunications Technologies and Business Management. **ETSETB** (interuniversity UPC+UB degree)

Telecommunications Technologies and Services Engineering. Majors: Audiovisual Systems / Telecommunications Systems / Network Systems. **ETSETB**

70

BACHELOR'S DEGREES

# Bachelor's degrees

## 1. Admission

Select your admission route:

I am a student from a European university system, an International Baccalaureate student or a student from a country with a reciprocity agreement.

Students from a university system that does not have an agreement with Spain.

**1. Obtain your credential** on the National Distance Education University (UNED) website. The credential or certification UNEDasiss is the equivalent of your marks to the admission mark for the Spanish university system, of up to 10 points.

**1. Apply for homologation** of your degree at the Spanish embassy or consulate.

**2. Take university entrance examinations** through the UNED.

**2. You can improve your mark** by up to 4 points.

<https://unedasiss.uned.es>

## 2. Pre-enrolment and application

The Catalan government centralises pre-enrolment and admission for Catalan public universities through the University Access Portal and the ACCESNET application.

**1. Register** in the University Access Portal.

**2. Apply for a place** on the degrees of your choice, in order of preference.

**3. Attach** the documents required.

**4. Accept** the place that has been assigned to you in the application. Your assignation will be based on your marks.

<https://accesuniversitat.gencat.cat>

[www.upc.edu/en/bachelors](http://www.upc.edu/en/bachelors)

# 3 Enrolment at the UPC

1. **Enrol online.**  
Follow the instructions the UPC will send you by e-mail.

[www.upc.edu/en/bachelors/access-and-admission](http://www.upc.edu/en/bachelors/access-and-admission)

6,045

STUDENTS ON WORK  
PLACEMENT

80

INTERNATIONAL  
DOUBLE DEGREES

## An unforgettable experience

As a UPC student, my exchange at a highly regarded university like ETH Zurich was deeply enriching. Academically, I have discovered very interesting disciplines and, personally, the cultural diversity of the city has allowed me to make contact with students from all over the world and live new experiences. It has been an unforgettable experience in every way.

**Ivan  
Gorquir**  
(Spain)



# Master's degrees

## AEROSPACE ENGINEERING FIELD

● Aerospace Engineering Specialisations: Aerospace Vehicles / Airports / Propulsion / Space / Air Navigation	admissions.eseiaat@upc.edu
● Aerospace Science and Technology (MAST)	master.aerospace@upc.edu
● Applications and Technologies for Unmanned Aircraft Systems (Drones)	med.eetac@upc.edu
● Space and Aeronautical Engineering	admissions.eseiaat@upc.edu

## APPLIED SCIENCES FIELD

● Advanced Mathematics and Mathematical Engineering (MAMME)	coordinador.mamme.fme@upc.edu
● Atomistic and Multiscale Computational Modelling in Physics, Chemistry and Biochemistry	i.moreira@ub.edu
● Computer Vision	masters.etsetb@upc.edu
● Engineering Physics	masters.etsetb@upc.edu
● Occupational Health and Safety	master.univ.prl@upc.edu
● Photonics	master.photonics@etsetb.upc.edu
● Pure and Applied Logic	rafel.farre@upc.edu
● Quantum Science and Technology	masters.etsetb@upc.edu
● Statistics and Operations Research (MESIO UPC-UB)	coordinadora.mesio.fme@upc.edu
● Erasmus Mundus / Bio and Pharmaceutical Materials Science (BIOPHAM)	masters.etsetb@upc.edu
● Erasmus Mundus / Photonics Engineering, Nanophotonics and Biophotonics (Europhotonics)	master.photonics@etsetb.upc.edu

## ARCHITECTURE, URBANISM AND BUILDING CONSTRUCTION FIELD

● Advanced Building Construction	master.univ.edificacio@upc.edu
● Advanced Studies in Architecture-Barcelona (MBArch) Specialisations: Contemporary Project / Urban and Architectural Management and Valuation / Urbanism / Urbanism / Process, Design and Programming / Theory, History and Culture / Architecture, Energy and Environment / Structures in Architecture / Technological Innovation in Architecture / Architectural Restoration and Rehabilitation	secretaria.etsab@upc.edu
● Advanced Studies in Design-Barcelona (MBDesign) Specialisations: Art Direction in Design / Contemporary Design / Design, Innovation and Technology / Design Research / Industrial Design Engineering	secretaria.etsab@upc.edu
● Architecture. Barcelona Campus	secretaria.etsab@upc.edu
● Architecture. Sant Cugat del Vallès Campus	marq@etsav.upc.edu
● Architectural Design Ecology in the Digital Age	made.etsav@upc.edu
● Building Construction Management	master.univ.gestio.edificacio@upc.edu
● Diagnosis and Intervention Techniques in Building Construction	master.univ.diagnosi.edif@upc.edu
● Landscape Architecture (MBLandArch)	secretaria.etsab@upc.edu
● Real Estate Development and Management	master.univ.dgi@upc.edu
● Sustainable Intervention in the Built Environment (MISMeC)	mismec@etsav.upc.edu



[www.upc.edu/en/masters](http://www.upc.edu/en/masters)

## BIOSYSTEMS AND AGRI-FOOD ENGINEERING FIELD

● Agronomical Engineering	<a href="mailto:estanislau.fons@udl.cat">estanislau.fons@udl.cat</a>
● Aquaculture	<a href="mailto:eeabb.info@upc.edu">eeabb.info@upc.edu</a>
● Enabling Technologies for the Food and Bioprocessing Industry (TECH4AGRI+FOOD)	<a href="mailto:eeabb.info@upc.edu">eeabb.info@upc.edu</a>

## CIVIL ENGINEERING FIELD

● Civil Engineering Specialisations: Computational Engineering / Environmental Engineering and Sustainability / Geotechnical Engineering / Structural Engineering and Construction / Transport Engineering and Urbanism / Water Engineering	<a href="mailto:admissions.masters.camins@upc.edu">admissions.masters.camins@upc.edu</a>
● Geotechnical Engineering	<a href="mailto:admissions.masters.camins@upc.edu">admissions.masters.camins@upc.edu</a>
● Groundwater Hydrology	<a href="mailto:admissions.masters.camins@upc.edu">admissions.masters.camins@upc.edu</a>
● Mining Engineering	<a href="mailto:infomasters.manresa@epsem.upc.edu">infomasters.manresa@epsem.upc.edu</a>
● Computational and Data-Assisted Engineering	<a href="mailto:admissions.masters.camins@upc.edu">admissions.masters.camins@upc.edu</a>
● Oceanography and Marine Management	<a href="mailto:admissions.masters.camins@upc.edu">admissions.masters.camins@upc.edu</a>
● Structural Analysis of Monuments and Historical Constructions (SAHC)	<a href="mailto:admissions.masters.camins@upc.edu">admissions.masters.camins@upc.edu</a>
● Structural and Construction Engineering	<a href="mailto:admissions.masters.camins@upc.edu">admissions.masters.camins@upc.edu</a>
● Urban Mobility	<a href="mailto:admissions.masters.camins@upc.edu">admissions.masters.camins@upc.edu</a>
● Water Engineering	<a href="mailto:admissions.masters.camins@upc.edu">admissions.masters.camins@upc.edu</a>
● Erasmus Mundus / Flood Risk Management	<a href="mailto:admissions.masters.camins@upc.edu">admissions.masters.camins@upc.edu</a>
● Erasmus Mundus / Coastal and Marine Engineering and Management (CoMEM)	<a href="mailto:admissions.masters.camins@upc.edu">admissions.masters.camins@upc.edu</a>
● Erasmus Mundus / Risk Assessment and Management of Civil Infrastructures (No Risk)	<a href="mailto:admissions.masters.camins@upc.edu">admissions.masters.camins@upc.edu</a>

## HEALTH SCIENCES AND TECHNOLOGY FIELD

● Advanced Biomedical Technologies	<a href="mailto:masters.eebe@upc.edu">masters.eebe@upc.edu</a>
● Biomedical Engineering	<a href="mailto:montserrat.vallverdu@upc.edu">montserrat.vallverdu@upc.edu</a>
● Health Data Science	<a href="mailto:escola.etseib@upc.edu">escola.etseib@upc.edu</a>
● Neuroengineering and Rehabilitation	<a href="mailto:escola.etseib@upc.edu">escola.etseib@upc.edu</a>
● Optometry and Vision Sciences	<a href="mailto:info.muocv.foot@upc.edu">info.muocv.foot@upc.edu</a>
● Vision Science Research	<a href="mailto:jaume.pujol@upc.edu">jaume.pujol@upc.edu</a>
● Erasmus Mundus / Bio and Pharmaceutical Materials Science (BIOPHAM)	<a href="mailto:masters.etsetb@upc.edu">masters.etsetb@upc.edu</a>

- 1 academic year / 60 ECTS
- 1.5 academic year / 90 ECTS
- 2 academic years / 120 ECTS

! Master's degree taught entirely in English.

**100** MASTER'S DEGREES  
50 TAUGHT IN  
ENGLISH

## ENGINEERING FOR INDUSTRY FIELD

● Advanced Biomedical Technologies	masters.eebe@upc.edu
● Advanced Materials Science and Engineering	masters.eebe@upc.edu
● Advanced Studies in Design-Barcelona (MBDesign) Specialisations: Art Direction in Design / Contemporary Design / Design, Innovation and Technology / Design Research / Industrial Design Engineering	secretaria.etsab@upc.edu
● Automatic Control and Robotics	escola.etsab@upc.edu
● Automatic Systems and Industrial Electronics Engineering (MUESAEI). Terrassa Campus Specialisations: Advanced Production and Automation Technologies / Optimal Management of Electrical Energy	admissions.eseiaat@upc.edu
● Automatic Systems and Industrial Electronics Engineering (MUESAEI). Vilanova i la Geltrú Campus Specialisations: Intelligent Systems	academica.epsevg@upc.edu
● Automotive Engineering	escola.etsab@upc.edu
● Biomedical Engineering	montserrat.vallverdu@upc.edu
● Chemical Engineering	masters.eebe@upc.edu
● Electric Power Systems and Drives	escola.etsab@upc.edu
● Renewable Energy Engineering. Specialisations: Electrical Energy / Energy Management / Renewable Energies / Thermal Energy	escola.etsab@upc.edu
● Industrial Engineering. Barcelona Campus Specialisations: Automation and Robotics / Biomedical Engineering / Construction and Structures / Electrical Engineering / Electronics / Energy / Industrial Organization / Information Technologies for Industry / Mechanical Engineering / Nuclear Engineering / Process Greening	escola.etsab@upc.edu
● Industrial Engineering. Terrassa Campus Specialisations: Biomedical Engineering / Construction and Structures / Electrical Engineering / Industrial Organization / Mechanical Engineering / Paper and Graphic Technology / Textile Design and Technology / Thermal Energy	admissions.eseiaat@upc.edu
● Industrial Facility Design and Management	infomasters.manresa@upc.edu
● Interdisciplinary and Innovative Engineering Specialisations: Advanced Manufacturing Systems / Efficient Systems / Healthcare and Biomedical Applications	masters.eebe@upc.edu
● Management Engineering. Barcelona Campus	escola.etsab@upc.edu
● Management Engineering. Terrassa Campus	admissions.eseiaat@upc.edu
● Mechanical Technologies	masters.eebe@upc.edu
● Neuroengineering and Rehabilitation (UPC-UAB)	escola.etsab@upc.edu
● Nuclear Engineering. InnoEnergy	escola.etsab@upc.edu
● Paper and Graphics Technology	admissions.eseiaat@upc.edu
● Polymers and Bioplastics	masters.eebe@upc.edu
● Renewable Energy Engineering	escola.etsab@upc.edu
● Research in Mechanical Engineering	admissions.eseiaat@upc.edu
● Technologies for Distributed Energy Systems	masters.eebe@upc.edu
● Technology and Engineering Management	admissions.eseiaat@upc.edu
● Textile Design and Technology	admissions.eseiaat@upc.edu
● Thermal Engineering	escola.etsab@upc.edu
● Urban Mobility	admissions.masters.camins@upc.edu
● Erasmus Mundus / Advanced Materials Science and Engineering (AMASE)	masters.eebe@upc.edu
● Erasmus Mundus / Decentralised Smart Energy Systems (DENSYS)	escola.etsab@upc.edu
● Erasmus Mundus / Dynamics of Renewables-based Power Systems (DREAM)	escola.etsab@upc.edu
● Erasmus Mundus / Hydrogen Systems and Enabling Technologies (HySET)	masters.eebe@upc.edu
● Erasmus Mundus / Science in Fire Safety Engineering (IMFSE)	masters.eebe@upc.edu
● Erasmus Mundus / Sustainable Systems Engineering (EMSSE)	masters.eebe@upc.edu

## ENVIRONMENT, SUSTAINABILITY AND NATURAL RESOURCES FIELD

● Environmental Engineering	admissions.masters.camins@upc.edu
● Natural Resources Engineering	infomasters.manresa@epsem.upc.edu
● Sustainability and Strategies for a Just Global Transition	mcts.is.upc@upc.edu
● Sustainable Intervention in the Built Environment (MISMEC)	mismec@etsav.upc.edu

## INFORMATICS ENGINEERING FIELD

● Artificial Intelligence	info.masters@fib.upc.edu
● Cybersecurity	masters.etsetb@upc.edu
● Data Science	fib.vd.postgrau@upc.edu
● Informatics Engineering	info.masters@fib.upc.edu
● Innovation and Research in Informatics (MIRI) Specialisations: Advanced Computing / Computer Graphics and Virtual Reality / Computer Networks and Distributed Systems / High Performance Computing	info.masters@fib.upc.edu
● Machine Learning and Cybersecurity for Internet-Connected Systems	infomasters.manresa@epsem.upc.edu
● Erasmus Mundus / Communications, Engineering and Data Science (CoDas)	info.masters@fib.upc.edu
● Erasmus Mundus / Data Engineering and Artificial Intelligence (DEAI)	codas.master@upc.edu

## TELECOMMUNICATIONS ENGINEERING FIELD

● Advanced Telecommunication Technologies (MATT)	masters.etsetb@upc.edu
● Applications and Technologies for Unmanned Aircraft Systems (Drones)	med.eetac@upc.edu
● Applied Telecommunications and Engineering Management (MASTEAM)	eetac.master@upc.edu
● Artificial Intelligence for Connected Industries	ai4ci.master@upc.edu
● Cybersecurity	masters.etsetb@upc.edu
● Electronic Engineering (MEE)	masters.etsetb@upc.edu
● Quantum Science and Technology	masters.etsetb@upc.edu
● Machine Learning and Cybersecurity for Internet-Connected Systems	infomasters.manresa@epsem.upc.edu
● Semiconductor Engineering and Microelectronic Design	masters.etsetb@upc.edu
● Telecommunications Engineering (MET) Specialisations: Antennas, Microwaves and Photonics for Communications and Earth Observation / Electronics / Fibre Optic Communications / Internet Networks and Technologies / Multimedia / Wireless Communications	masters.etsetb@upc.edu
● Erasmus Mundus / Communications, Engineering and Data Science (CoDas)	codas.master@upc.edu

## NAVAL, MARINE AND NAUTICAL ENGINEERING FIELD

● Management and Operation of Marine Energy Facilities	coordinador.mugoiem@fnb.upc.edu
● Nautical Science and Maritime Transport Management	coordinador.mungtm@fnb.upc.edu
● Naval Architecture and Ocean Engineering Specialisations: Yacht and Pleasure Craft Design / Ocean Energies	coordinador.mueno@fnb.upc.edu

## TEACHER TRAINING AND GENDER STUDIES FIELD

● Secondary and Upper Secondary Education, Vocational Training and Foreign Language Teaching Specialisations: Industrial Technologies / Technology	info.master.secundaria@fib.upc.edu
● Secondary and Upper Secondary Education, Vocational Training and Foreign Language Teaching Specialisation: Mathematics	coord.master.secundaria@uab.cat
● Women's, Gender and Citizenship Studies Specialisations: Theory, Criticism and Culture / Women, Work and Public Policy	masterestudisdone@gmail.com

- 1 academic year / 60 ECTS
- 1.5 academic year / 90 ECTS
- 2 academic years / 120 ECTS

! Master's degree taught entirely in English.

[www.upc.edu/en/masters](http://www.upc.edu/en/masters)

# Master's degrees

## 1. Access

Select your admission route:

I have a university degree from a country in the European Higher Education Area or a homologated degree.

I have a university degree that makes me eligible for admission to master's degrees in my country. The UPC will check its equivalence.

**Bear in mind that some master's degrees may have specific admission requirements and criteria.**

## 2. Pre-enrolment and application

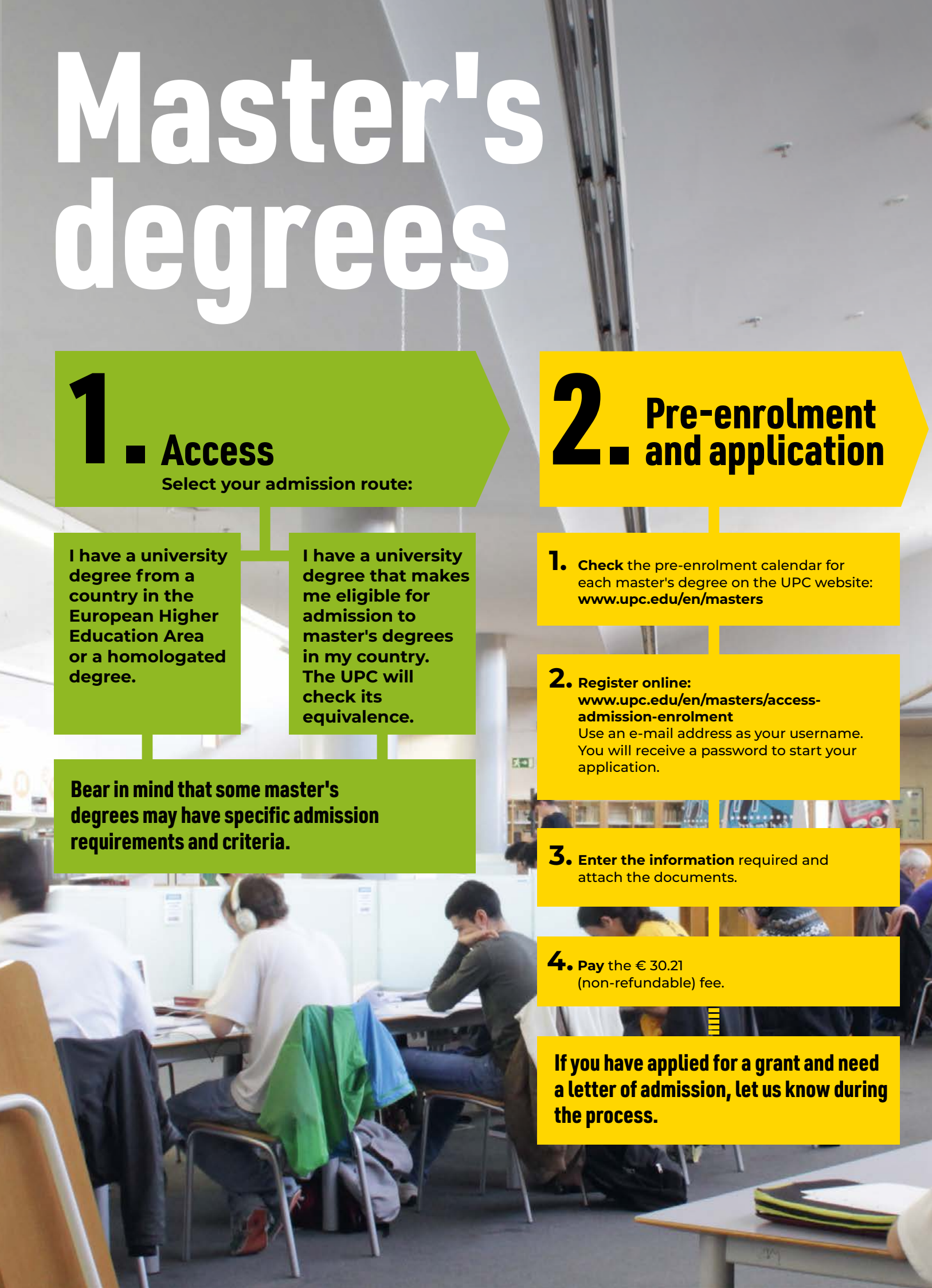
**1.** Check the pre-enrolment calendar for each master's degree on the UPC website: [www.upc.edu/en/masters](http://www.upc.edu/en/masters)

**2.** Register online: [www.upc.edu/en/masters/access-admission-enrolment](http://www.upc.edu/en/masters/access-admission-enrolment)  
Use an e-mail address as your username. You will receive a password to start your application.

**3.** Enter the information required and attach the documents.

**4.** Pay the € 30.21 (non-refundable) fee.

**If you have applied for a grant and need a letter of admission, let us know during the process.**



[www.upc.edu/en/masters](http://www.upc.edu/en/masters)

## 3. Review of your application

The master's degree coordinators will review and decide on applications for admission in accordance with the admission criteria.

1. Check the status of your application.

## 4. Admission and enrolment

1. You will receive an e-mail with the decision on your application.

2. Accept the place that has been assigned to you in the application. Admission will be conditional until the academic details provided have been confirmed.

3. Pay a € 300 fee to reserve the place. The amount will be deducted from the enrolment fee.

4. Enrol and provide the original documents. Check whether you need a visa. [www.upc.edu/en/masters/access-admission-enrolment](http://www.upc.edu/en/masters/access-admission-enrolment)



**Diana Ramírez**  
(Colombia)

### UPC, the best decision

To have chosen the UPC has been one of the best decisions I have made since studying in Colombia. It has pioneering architecture degrees, a top-level teaching team and good facilities that are spacious and accessible. It offers international conferences and networking programmes on a regular basis.

# Doctoral programmes

The **UPC Doctoral School** organises doctoral activities and studies. It is distinguished by its international vocation and intense relationship with businesses: you can opt for an industrial doctorate in Catalonia and participate in strategic research projects with over 200 companies, applying your thesis to new challenges in the production sector.

## ARCHITECTURE, URBANISM AND CONSTRUCTION FIELD

Architectural, Building Construction and Urbanism Technology	secretariadoctorat.utgab@upc.edu
Architectural, Civil and Urban Heritage and Refurbishment of Existing Buildings	secretariadoctorat.utgab@upc.edu
Architectural Design	secretariadoctorat.utgab@upc.edu
Architecture, Energy and Environment	secretariadoctorat.utgab@upc.edu
Design	secretariadoctorat.utgab@upc.edu
Theory and History of Architecture	secretariadoctorat.utgab@upc.edu
Urban and Architectural Management and Valuation	secretariadoctorat.utgab@upc.edu
Urbanism	secretariadoctorat.utgab@upc.edu

## CIVIL AND ENVIRONMENTAL ENGINEERING FIELD

Civil Engineering	doctorat.ec.camins@upc.edu
Construction Engineering	doctorat.eco.camins@upc.edu
Earthquake Engineering and Structural Dynamics	doctorat.esis.camins@upc.edu
Environmental Engineering	doctorat.eamb.camins@upc.edu
Geotechnical Engineering	doctorat.et.camins@upc.edu
Marine Sciences	doctorat.cmar.camins@upc.edu
Nautical and Marine Engineering and Naval Radio-Electronics	cen@cen.upc.edu
Structural Analysis	doctorat.ae.camins@upc.edu
Sustainability	doctorat.sos.camins@upc.edu

## INDUSTRIAL ENGINEERING FIELD

Automatic Control, Robotics and Vision	doctorat.arv.utgaeib@upc.edu
Biomedical Engineering	doctorate.ebio.utgaeib@upc.edu
Business Administration and Management	doctorat.ade.utgaeib@upc.edu
Chemical Process Engineering	doctorat.eebe@upc.edu
Electric Energy Systems	doctorat.terrassa@upc.edu
Electrical Engineering	doctoratb.utgaeib@upc.edu
Materials Science and Engineering	doctorat.eebe@upc.edu
Mechanical Engineering, Fluids and Aeronautics	doctorat.emfa.utgaeib@upc.edu
Natural Resources and Environment	doctorat.manresa@upc.edu
Nuclear and Ionising Radiation Engineering	doctoratd.utgaeib@upc.edu
Polymers and Biopolymers	doctorat.eebe@upc.edu
Supply Chain and Operations Management	doctorat.scom.utgaeib@upc.edu
Textile and Paper Engineering	doctorat.terrassa@upc.edu
Thermal Engineering	doctorat.terrassa@upc.edu

## INFORMATION AND COMMUNICATION TECHNOLOGIES ENGINEERING FIELD

Artificial Intelligence	doctorat.ia@upc.edu
Bioinformatics	gestio.doctorat.bioinformatica@upc.edu
Computer Architecture	doctorat.ac@upc.edu
Computing	doctorat.computacio@upc.edu
Electronic Engineering	doctorat.eel@upc.edu
Network Engineering	doctorat.entel@upc.edu
Signal Theory and Communications	doctorat.tsc@upc.edu

## SCIENCES FIELD

Aerospace Science and Technology	doctorat.aero@upc.edu
Agri-Food Technology and Biotechnology	doctorat.deab@upc.edu
Applied Mathematics	doctoma.fme@upc.edu
Computational and Applied Physics	doctorat.fa@upc.edu
Engineering, Science and Technology Education	doctorat.eect@upc.edu
Optical Engineering	doctorate.doo@upc.edu
Photonics	academicaffairs@icfo.es
Statistics and Operations Research	doctorat.eio@upc.edu

# 1. Access

I have a bachelor's degree and master's degree from a university in Spain or the European Higher Education Area (EHEA).

My degree makes me eligible for admission to a master's degree and I have passed a minimum of 300 ECTS credits, 60 of them on a master's degree.

My degree is from a foreign education system outside the EHEA.

**a.**  
My degree has been homologated.

**b.**  
My degree has not been homologated.

The UPC will check the equivalence of the degree in Spain and whether it makes you eligible for admission to doctoral studies in the awarding country.

# 2. Pre-enrolment

**1. Consult** the doctoral programmes of the UPC.

**2. Send your application form** via the UPC Doctoral School website.

**3. Check** whether you need a visa.

# 3. Admission and enrolment

**1. The academic committee** of the programme **will assess your application** and issue your letter of admission.

**2. Check** the documents you will need online.

**3. Enrol** in person.

[www.doctorat.upc.edu/en/future-doctoral-candidates](http://www.doctorat.upc.edu/en/future-doctoral-candidates)

## The value of practical experience

My doctoral career at the UPC, taking an industrial doctorate in Barcelona, has been transformative. The exceptional quality of research at the UPC and its strong ties to industry have provided me with valuable practical experiences. The professors' dedication to scientific research, the excellent laboratory facilities and the University's commitment to innovation fostered my academic growth.

Linh Johansson  
(Sweden)



international@upc.edu  
www.upc.edu

## Follow us:

 UPC International

 @upc\_international

 @UPCInternational

 UPC International



UNIVERSITAT POLITÈCNICA  
DE CATALUNYA  
BARCELONATECH